

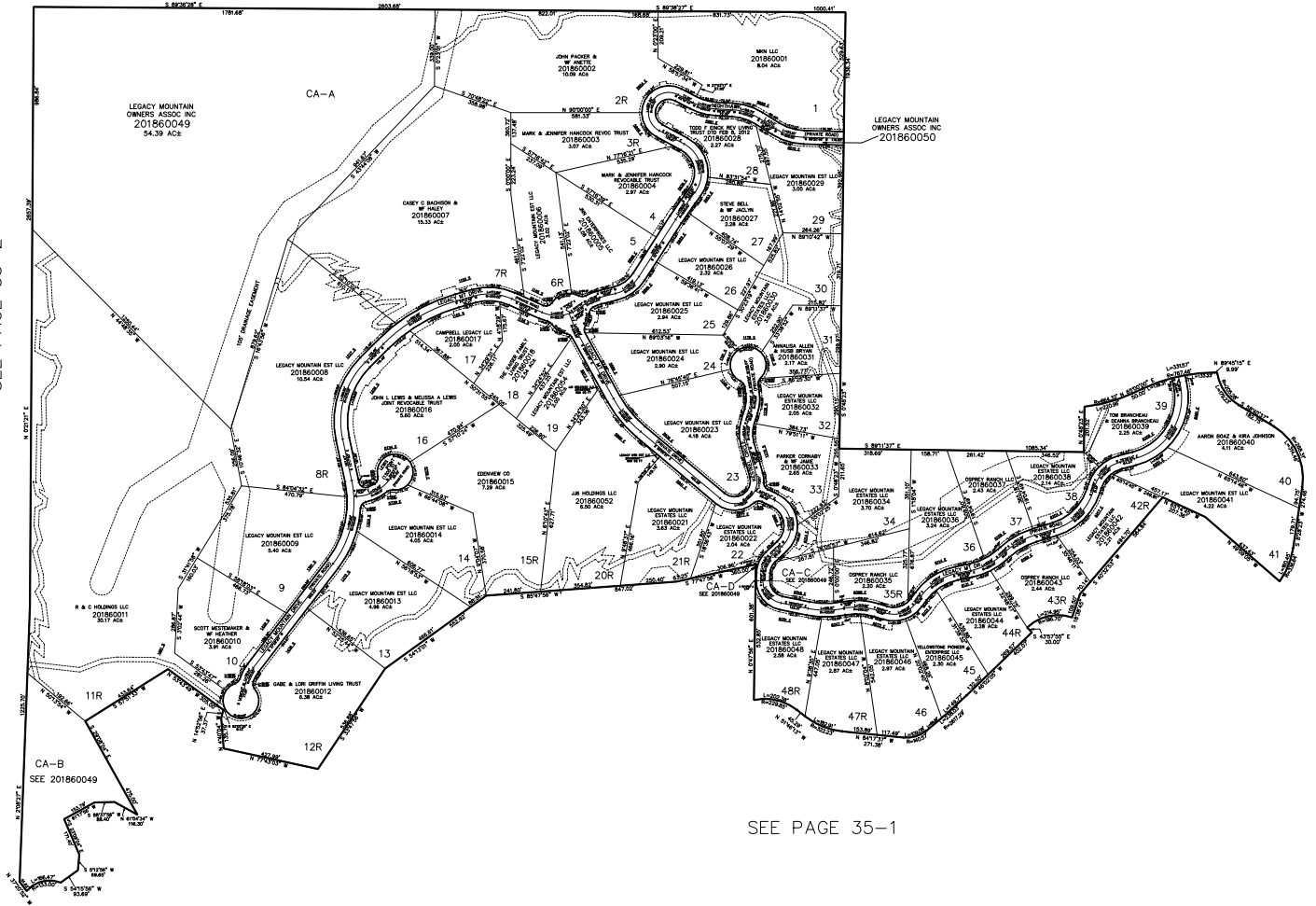
PART OF SECTION 23, T.6N., R.1E., S.L.B. & M.
LEGACY MOUNTAIN ESTATES

IN WEBER COUNTY
SCALE 1" = 400'

TAXING UNIT: 520

SEE PAGE 35

SEE PAGE 35-2



SEE PAGE 35-1

10' UTILITY & DRAINAGE EASEMENTS EACH SIDE OF PROPERTY LINES AS INDICATED BY DASHED LINES EXCEPT AS OTHERWISE SHOWN.

FOR COMPLETE ENG DATA SEE ORIGINAL DEDICATION PLAT IN BOOK 91, PAGE 61 - 67 OF RECORDS.